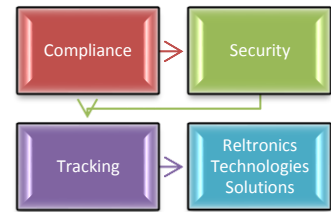


About Reltronics Technologies, Inc.

Reltronics Technologies, Inc. specializes in Tracking Solutions. The company focuses in manufacturing, deploying, and monitoring Tracking systems that include radio frequency identification, GPS, and wireless technologies. Key areas of concentration:

- GIS & GPS-based Resource (Vehicle, Personnel, Fleet) Management Systems
- RFID-based Asset, Record, Parking Lot, & Supply Chain Management Systems
- Lean Six Sigma & Organizational Change Management Consulting



Reltronics Technologies consults & integrates systems which involve technologies RFID, data encryption, closed circuit television (CCTV), and electronic article surveillance (EAS) systems. Reltronics Technologies is a certified minority business enterprise (MBE). The key focus areas of Reltronics Technologies are in consulting, developing and deploying technologies and assisting in securing and tracking assets, records, resources, and facilities. Using Wireless, WiFi, and Satellite BGAN technology, Reltronics Technologies enables data transmission and remote connectivity worldwide. Reltronics Technologies has deployed numerous security systems, including GIS, GPS, BGAN, and wireless based automated vehicle location systems, asset management systems, record management systems, automated



content management systems and automated sensor systems.

Key Focus Areas

- Versatile security systems that integrate with legacy systems.
- Versatile Radio Frequency Identification (RFID) Framework that is hot-pluggable and integrated with Security Systems.
- Fully configurable and compliant GPS and GIS systems with standards within the Commercial, Healthcare, Government, and Consumer sectors.
- Flexible GPS tracking architecture to meet the user needs for legacy and new hardware.
- Flexible Passive and Active Monitoring through GSM, EDGE, GPRS, 3G, 4G, BGAN technologies.
- Consultation in key areas based upon our level of expertise including Organization Change Management and Lean Six Sigma, and Certification Training.

Experience

- Critical condition monitoring Systems
- GSM and GPS-based Vehicle Management
- GIS and weather implementation.
- WiFi/GSM/GPRS/BGAN-supported GPS Tracking Systems
- Electronic article surveillance (EAS)
- RFID Integration for end-user customer care and in-process integration
- Smart-Connectivity - Seamlessly interconnecting remote instruments
- Remote Diagnostics and monitoring
- Remote Medical Device/Instruments Error Handling Interfaces
- Electronic Asset Management Systems
- Fleet Management Systems
- Pet, Elderly, & Resource Surveillance
- Organizational Change Management

Standards Adherence

- American National Standards Institute (ANSI)
- National Electrical Code (NEC/NFPA 70/72)
- Underwriters Laboratories (UL)
- Factory Mutual (FM)
- Electronic Record Keeping and Signatures, per FDA 21 CFR Part 11. Design Control Elements as per FDA 21 CFR Part 820. FDA and ISO Quality System Requirements(QSR)
- HIPAA, EPCGlobal, ISO, and IEEE Guidance Documents & Standards,
- European EN Guidance Documents,
- HL7 and ASTM Protocols,
- NCCLS/CLSI Guidance and Standards,
- IEEE/AAMI/MIL Standards,

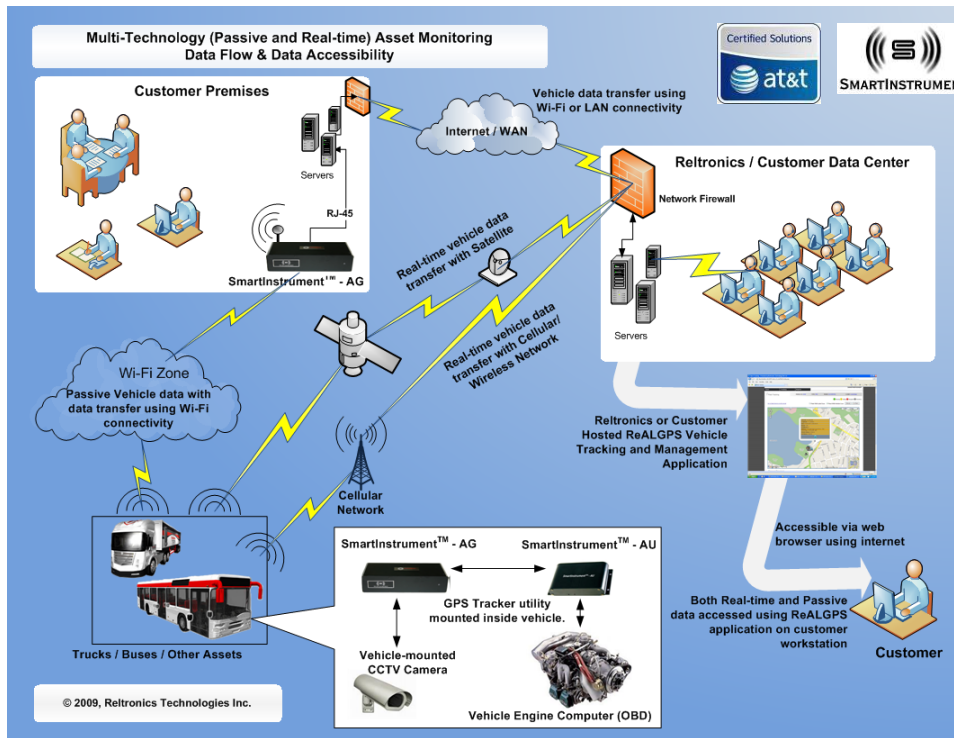
Infrastructure

- Fully secure with rigorous encryption with online metadata analysis for continuous security.
- Fully support long-term data warehousing of data for added security.
- Remote monitoring and diagnostics stations as per customer requirements (online and offline)
- Conducive to supporting interface and application development in an expeditious manner.
- Supporting rigorous customer deliverables.
- Identifying opportunities during development that will fulfill future unmet needs.
- Supportive of meeting high standards in customer satisfaction.
- Staff of Blackbelts and Master Blackbelts to aide in optimizations.



reltronicstech@outlook.com
http://www.reltronicstech.com

Resource Management System: SECURE RESOURCES: Vehicles, Personnel, Fleet, Pets



Reltronics Technologies, Inc. offers a GPS-based automatic resource location system based upon the ReALTrack framework which is fully integrated with GIS (Geographic Information Systems) systems and BGAN (Broadband Global Area Network)



systems. The system is a real-time resource locator which simplifies the resource management process by congregating and managing associated information regarding the vehicle in a timely and efficient manner. It utilizes the GIS/ GSM/ GPRS/ CDMA/ BGAN/ WiFi network to send data from anywhere. The system records resource information and resource movement automatically or manually, and provides updated and accurate data in real time. The Company is well acquainted with the technical environment many Counties including a countywide GIS System based on ESRI GIS Software using ArcGIS Server v9.3.1, ArcInfo v9.3.1, ArcView v9.3.1 and ArcGIS Editor v9.3.1. Pictometry fly-over photos are integrated into the GIS System. At times, GIS data is also integrated with the New World Systems Public Safety applications for the County Sheriff's Department and Emergency Management Services. Reltronics Technologies' Consultants support the GIS System which is governed by the GIS Focus Team. There are many advantages of this system: (a) It enables an organization to manage its resources with automated information update, (2) It eliminates maintaining physical or manual information, (3)

It facilitates remote monitoring of location, (4) It assures accurate data transmission (rather than data that a driver might provide as to where they are currently located), (5) It reduces the overall resource base with improved resource utilization, (6) It assures increased productivity, (7) It enables purchase efficiency, (8) It ascertains cost-effective maintenance, (9) It contributes to the enhancement and better return of investment, (10) It provides a sustainable upgrade in profitability reducing the cumbersome task of having employees handle excessive controls and maintaining reports for resource management, (11) It ensures effective resource management around the clock, (12) It provides data where employees constantly have vehicle, equipment, tools and other resources when required, (13) It closely monitors information including resource movement and its association, and (14) It enables maintaining resources meticulously while integrating business policies.



reltronicstech@outlook.com
<http://www.reltronicstech.com>

Asset & Inventory Management & Tracking Systems, RFID: Assets, Inventory



Reltronics Technologies offer the asset management system based upon ReALTrack framework. The ReALTrack-AMS is a real-time asset and inventory monitoring and management application, which simplifies the asset management process by congregating and managing associated information regarding the assets in a timely and efficient manner. ReALTrack-AMS records asset and inventory movements automatically or manually, and provides updated data in real time which is accurate thus enabling an organization manage its assets and inventory with automated information updates as opposed to maintaining a physical inventory. The outcome is a reduced overall asset base with improved asset utilization, increased productivity, purchase efficiency and maintenance, contributing to enhancement. This provides a sustainable upgrade in profitability reducing the cumbersome task of having employees handle excessive controls and maintaining reports. ReALTrack AMS ensures effective asset management round the clock, where employees constantly have equipment, tools and other resources when required. Assets are tracked and the information delivered includes its associations, visitors, their assets, lost assets, unused assets etc. Closely monitored information includes movement, its association, and maintaining records meticulously while integrating business policies.

Record Management & Tracking Systems, RFID: Records, Files



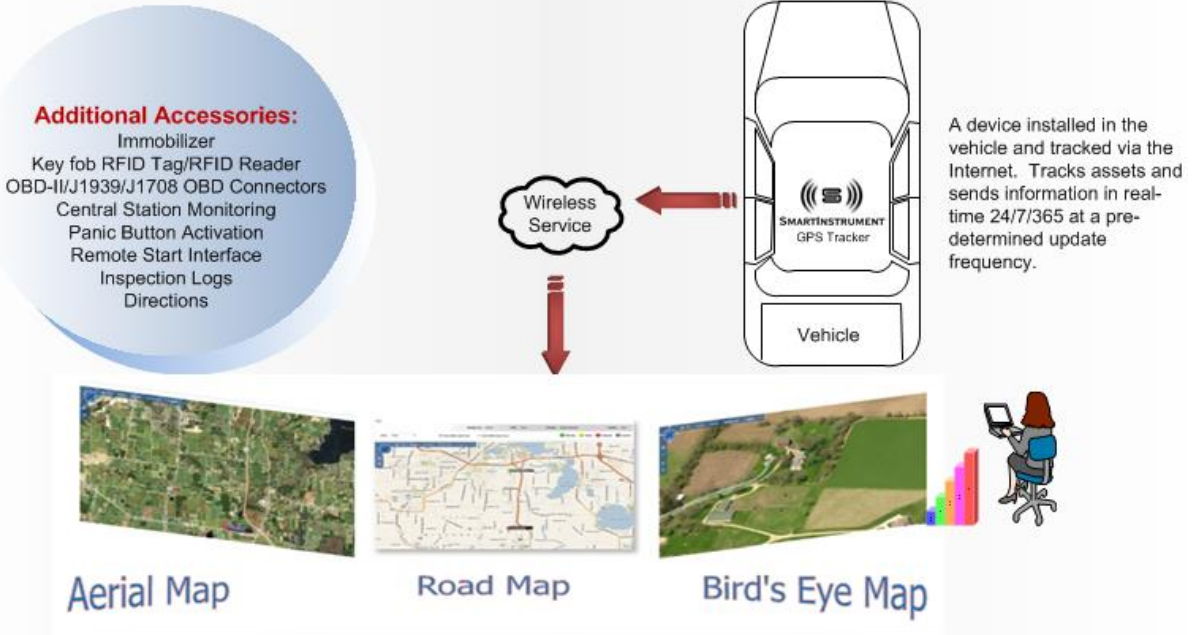
Record Management is the practice of identifying, classifying, archiving, preserving, or even destroying records. The International Standard on records management, ISO 15489: 2001 defines records management as, "The field of management responsible for the efficient and systematic control of the creation, receipt, maintenance, use and disposition of records, including the processes for capturing and maintaining evidence of and information about business activities and transactions in the form of records". ReALTrack-RMS complies with the ISO standards for physical record management. Delay in a situation which demands immediate locating of files for a crucial client affects an organization's services and economically hurts it in terms of revenue generating capabilities.

ReALTrack-RMS is designed to effectively resolve record management issues that are limited to physical file tracking and management. ReALTrack-RMS is an efficient tool at forms and offices such as Courts, Insurance companies, Government, Medical related businesses, Hospitals, Banks and Real Estate organizations. ReALocator allows inventorying existing files and locating lost files. The automated audio and visual display provides the user with appropriate cues to locate lost files.



Sights™ GPS Tracking Website ; Secure and Track Anythin, Anywhere

<p>✓ Device Features:</p> <ul style="list-style-type: none"> ✓ Remote Configuration ✓ Intelligent Power Management ✓ Power Low/Lost Alarm ✓ Emergency Voice Calls ✓ Cell ID Positioning Function ✓ Unit Password Setting ✓ Built-in Barometric Altimeter ✓ Built-in Buzzer/Vibrator ✓ Backup Battery Power Low Alarm ✓ Back-up Battery Capacity of > 3 Days ✓ Built-in Voice Wiretapping ✓ Geo-Fencing Reports ✓ Journey Logging: 20,000 Locations ✓ Simultaneous GSM/GPRS Communication ✓ Custom Reports (e.g., GPS Mileage Reports) ✓ Voice, SMS, GPRS, TCP/UDP Communication ✓ Remote Firmware upgrades. ✓ GPS Antenna Disconnect/Cut/Tamper Alarm ✓ 120,000 points data log storage ✓ Tow Alarm 	<p>✓ Typical Applications:</p> <ul style="list-style-type: none"> ✓ Live Monitoring of Vehicles ✓ Vehicle Functionality ✓ Over-speeding ✓ Accident Detection ✓ Real-time Tracking ✓ Geo-Fencing Reporting ✓ 3D G-Sensor Detection ✓ Custom Sensor Integration ✓ Impact & Shock Detection ✓ Temperature Monitoring ✓ Solar Panel Integration ✓ Immobilizer Integration ✓ On-board Diagnostics ✓ Pressure Monitoring ✓ Driver Authentication ✓ Patron Information ✓ RFID Integration ✓ Tamper Detection 	<p>✓ Specifications:</p> <ul style="list-style-type: none"> ✓ IP65 Rating: Capable to operate reliable in dusty environment ✓ Weight: 6 Oz. (170 gms); WGS-84 Datum Protocol ✓ Built-in 3D G- Sensor for Vehicle Motion and Impact Detection ✓ Operating Temperature: -4°F to 158°F (-20°C to + 70°C) ✓ Communication: GSM, SMS, GPRS, TCP / UDP ✓ Serial Port: 1 RS-232/DB9 Port (57600 bps, Configurable) ✓ Back-up Battery: 900mAH Li-Ion (3-day capacity) ✓ Cell ID positioning function ✓ Power Source: 8 (30V DC) ✓ Power Consumption: 70mA@12V DC (Operating Mode); 15mA@12V DC (Standby Mode); 6mA@12V DC (Deep Sleep Mode) 	<p>✓ Website Features:</p> <ul style="list-style-type: none"> ✓ Breadcrumb Trail ✓ Turn-By-Turn Navigation ✓ Assets In Vicinity ✓ Speed, Idle and Ignition Status ✓ Home Position ✓ Get Position Manually ✓ Route Planner ✓ Multiple Fencing ✓ Fleet Tracking Map ✓ Tracking Replay Map ✓ Estimated Time ✓ Gas-Fill Up ✓ Activity Summary ✓ Mileage ✓ % Utilization in miles ✓ Archived Reports ✓ Patron Tracking ✓ SMS/Email Alerts
---	--	--	---



Can you substantiate your work environment with metrics and measurable that can be monitored?

Is your facility optimized?

Does it have efficient workflow?

Does your organization require a Change Manager?

Will you benefit from Soft Skills Consulting?

To be competitive in today's world, it is necessary to increase capacity, eliminate waste, overcome labor shortages and improve quality. This is only possible by sensible cost reduction and not just blanket cost reduction. Focusing on implementing Process and Design Excellence is pertinent in this environment. The data-driven approach is important to ascertain that decisions are logical and not just from "shoot from the hip" or "cavalier" kind of approach. Reltronics Technologies' Services assists in achieving a substantial return of investment (ROI) and can suggest logical operational improvements with our clients using Design for Six Sigma (DFSS or DEX) and Process Excellence (PEX). DEX allows identifying a logical and systematic approach to quality and operational process improvement. Note that PEX combines the tools and methodologies of Six Sigma, Lean technologies, and excellence in design to ascertain that the business grows substantially. DEX facilitates implementation of robust protocols (call rate analysis, defective parts, etc) at the onset of product development (otherwise, rework is required which is expensive)

The protocol is for our team to combine Process Excellence skills with the appropriate expertise in each vertical. There are nuances which are specific to each vertical. For instance, the healthcare vertical requires compliance on FDA rules and regulations whereas the government vertical requires compliance with specifications and licenses. Reltronics Technologies has a team of folks who assist in Process Excellence and optimize the processes such that there is a clear cut delineation whether a specific portion of the process should be performed in-house or whether the outsourcing benefits outweigh the in-house effort. Generally, to make the bottom line more visible, redundant tasks are reviewed.

In the past, Reltronics Technologies has assisted organizations and facilities to be more productive. Reltronics Technologies also has strategic partnerships around the world which facilitates making the customers more profitable and acquiring the most cost-effective solution (not to mention the best value proposition). Finally, Reltronics Technologies provides expert Lean Six Sigma training and expert MBB support and on-site mentoring for Yellow, Green and Blackbelt certifications including MBB certifications. Reltronics Technologies enables a systematic approach to quality process improvement and drives substantial business performance. Includes process excellence where the focus is on improving existing processes, design excellence, where the focus is to implement excellence at the onset of design, lean thinking to ascertain no wastage of resources and tasks. Reltronics Technologies Services enables a broader understanding and empowers individuals towards diminishing errors, reducing expenses, improving customer satisfaction, increasing capacity, increasing productivity, and growing revenue. Reltronics Technologies Services involve Process and Design Excellence and assists in optimizing existing processes and provide a common knowledge of implementing data-driven decisions.

Using Reltronics Technologies Services, executives can overcome resource constraints, improve productivity, retain talent, maximize profits, increase return of investment, increase or save revenue, create a world-class organization, maximize labor productivity, reduce errors, implement data-driven decisions, and get the most optimized data-analysis performed in the most cost-effective manner.

Please email us at reltronicstech@outlook.com for further information.

